

Standard Test Method for Determining the Flexural Creep Stiffness of Asphalt Binder Using the Bending Beam Rheometer (BBR)¹

This standard is issued under the fixed designation D 6648; the number immediately following the designation indicates the year of original adoption or, in the case of revision, the year of last revision. A number in parentheses indicates the year of last reappraisal. A superscript epsilon (ϵ) indicates an editorial change since the last revision or reappraisal.

1. Scope²

1.1 This test method covers the determination of the flexural-creep stiffness or compliance and m -value of asphalt binders by means of a bending-beam rheometer. It is applicable to material having flexural-creep stiffness values in the range of 20 MPa to 1 GPa (creep compliance values in the range of 50 nPa^{-1} to 1 nPa^{-1}) and can be used with unaged material or with materials aged using aging procedures such as Test Method D 2872, Test Method D 1754, or Practice D 6521. The test apparatus may be operated within the temperature range from -36°C to 0°C .

1.2 Test results are not valid for test specimens that deflect more than 4 mm or less than 0.08 mm when tested in accordance with this test method.

1.3 *This standard does not purport to address all of the safety concerns, if any, associated with its use. It is the responsibility of the user of this standard to establish appropriate safety and health practices and determine the applicability of regulatory limitations prior to use.*

2. Referenced Documents

2.1 ASTM Standards:

C 802 Practice for Conducting an Interlaboratory Test Program to Determine the Precision of Test Methods for Construction Materials³

D 140 Practice for Sampling Bituminous Materials⁴

D 1754 Test Method for Effect of Heat and Air on Asphaltic Materials (Thin-Film Oven Test)⁴

D 2872 Test Method for Effect of Heat and Air on a Moving Film of Asphalt (Rolling Thin-Film Oven Test)⁴

D 6521 Practice for Accelerated Aging of Asphalt Binder Using a Pressurized Aging Vessel (PAV)⁴

E 77 Test Method for Inspection and Verification of Thermometers⁵

2.2 AASHTO Standard:

AASHTO MP1 Standard Specification for Performance Graded Binder⁶

2.3 *DIN Standard:*⁷
43760

3. Terminology

3.1 Definitions:

3.1.1 *asphalt binder, n* —an asphalt-based cement that is produced from petroleum residue either with or without the addition of modifiers.

3.1.2 *physical hardening, n* —a time-dependent, reversible stiffening of asphalt binder that typically occurs when the binder is stored below room temperature.

3.2 Definitions of Terms Specific to This Standard:

3.2.1 *contact load, n* —the load, P_c , required to maintain positive contact between the test specimen, supports, and the loading shaft; 35 ± 10 mN.

3.2.2 *flexural creep compliance, $D(t)$, n* —the ratio obtained by dividing the maximum bending strain (see Eq X1.5) in a beam by the maximum bending stress (Eq X1.4). The flexural creep stiffness is the inverse of the flexural creep compliance.

3.2.3 *flexural creep stiffness, $S(t)$, n* —the creep stiffness obtained by fitting a second order polynomial to the logarithm of the measured stiffness at 8.0, 15.0, 30.0, 60.0, 120.0, and 240.0 s and the logarithm of time (see Eq 4, section 14.4).

3.2.4 *measured flexural creep stiffness, $S_m(t)$, n* —the ratio (see Eq 3, section 14.2) obtained by dividing the measured maximum bending stress (see X1.4) by the measured maximum bending strain (see Eq X1.5). Flexural creep stiffness has been used historically in asphalt technology while creep compliance is commonly used in studies of viscoelasticity.

3.2.5 *m -value, n* —the absolute value of the slope of the logarithm of the stiffness curve versus the logarithm of time (see Eq 5, section 14.5).

3.2.6 *test load, n* —the load, P_t , of 240-s duration used to determine the stiffness of the asphalt binder being tested; 980 ± 50 mN.

4. Summary of Test Method

4.1 The bending beam rheometer is used to measure the

¹ This test method is under the jurisdiction of ASTM Committee D04 on Road and Paving Materials and is the direct responsibility of Subcommittee D04.44 on Rheological Tests.

Current edition approved June 10, 2001. Published August 2001.

² This standard is based on SHRP Product 1002 and AASHTO TPI.

³ *Annual Book of ASTM Standards*, Vol 04.02.

⁴ *Annual Book of ASTM Standards*, Vol 04.03.

⁵ *Annual Book of ASTM Standards*, Vol 14.03.

⁶ Available from the American Association of State Highway and Transportation Officials, 444 N. Capitol St. NW, Washington, DC 20001.

⁷ Deutsches Institut fuer Normung (German Standards Institute), Beuth Verlag GmbH, Burggrafenstrasse 6, 1000 Berlin 30, Germany.

mid-point deflection of a simply supported prismatic beam of asphalt binder subjected to a constant load applied to the mid-point of the test specimen. The device operates only in the loading mode; recovery measurements cannot be obtained with the bending beam rheometer.

4.2 A prismatic test specimen is placed in the controlled temperature fluid bath and loaded with a constant test load for 240.0 s. The test load (980 ± 50 mN) and the mid-point deflection of the test specimen are monitored versus time using a computerized data acquisition system.

4.3 The maximum bending stress at the midpoint of the test specimen is calculated from the dimensions of the test specimen, the span length, and the load applied to the test specimen for loading times of 8.0, 15.0, 30.0, 60.0, 120.0, and 240.0 s. The maximum bending strain in the test specimen is calculated from the dimensions of the test specimen and the deflection for the same loading times. The stiffness of the test specimen for the specific loading times is calculated by dividing the maximum bending stress by the maximum strain.

5. Significance and Use

5.1 The temperatures for this test are related to the winter temperature experienced by the pavement in the geographical area for which the asphalt binder is intended.

5.2 The flexural creep stiffness or flexural creep compliance, determined from this test, describes the low-temperature stress-strain-time response of asphalt binder at the test temperature within the range of linear viscoelastic response.

5.3 The low-temperature thermal cracking performance of asphalt pavements is related to the creep stiffness and the m-value of the asphalt binder contained in the mix.

5.4 The creep stiffness and the m-value are used as performance-based specification criteria for asphalt binders in accordance with AASHTO Method of Practice MP1.

6. Interferences

6.1 Measurements for which the mid-point deflection of the test specimen is greater than 4.0 mm are suspect. Strains in excess of this value may exceed the linear response of asphalt binders.

6.2 Measurements for which the mid-point deflection of the test specimen is less than 0.08 mm are suspect. When the

mid-point deflection is less than 0.08 mm, the test system resolution may not be sufficient to produce reliable test results.

7. Apparatus

7.1 A bending beam rheometer (BBR) test system consisting of the following: (1) a loading frame with test specimen supports, (2) a controlled temperature liquid bath which maintains the test specimen at the test temperature and provides a buoyant force to counterbalance the force resulting from the mass of the test specimen, (3) a computer-controlled data acquisition system, (4) test specimen molds, and (5) items for verifying and calibrating the system.

7.2 *Loading Frame*—A frame consisting of a set of sample supports, a blunt-nosed shaft to apply the load to the midpoint of the test specimen, a load cell mounted in line with the loading shaft, a means for zeroing the load applied to the test specimen, a means for applying a constant load to the test specimen and a deflection measuring transducer attached to the loading shaft. A schematic of the device is shown in Fig. 1.

7.3 *Loading System*—A loading system that is capable of applying a contact load of 35 ± 10 mN to the test specimen and maintaining a test load of 980 ± 50 mN within ± 10 mN.

7.3.1 *Loading System Requirements*—The rise time for the test load shall be less than 0.5 s. The rise time is the time required for the load to rise from the 35 ± 10 mN contact load to the 980 ± 50 mN test load. During the rise time the system shall dampen the test load to 980 ± 50 mN. Between 0.5 and 5.0 s, the test load shall be within ± 50 mN of the average test load, and thereafter shall be within ± 10 mN of the average test load. Details of the loading pattern are shown in Fig. 2.

7.3.2 *Loading Shaft*—A loading shaft continuous and in line with the load cell and deflection measuring transducer with a spherically shaped end 6.3 ± 0.3 mm in radius.

7.3.3 *Load Cell*—A load cell to measure the contact load and the test load. It shall have a minimum capacity of no less than 2.00 N and a resolution of at least 2.5 mN. It shall be mounted in line with the loading shaft and above the fluid level in the controlled temperature bath.

7.3.4 *Linear Variable Differential Transducer (LVDT)*—A linear variable differential transducer or other suitable device to measure the deflection of the test specimen. It shall have a linear range of at least 6 mm, and be capable of resolving linear

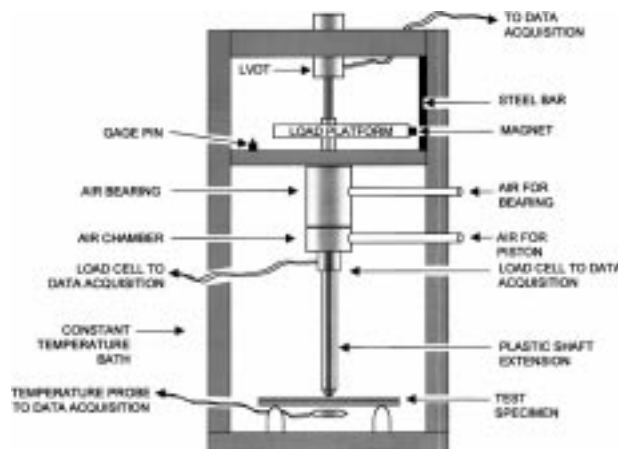


FIG. 1 Schematic of Test Device

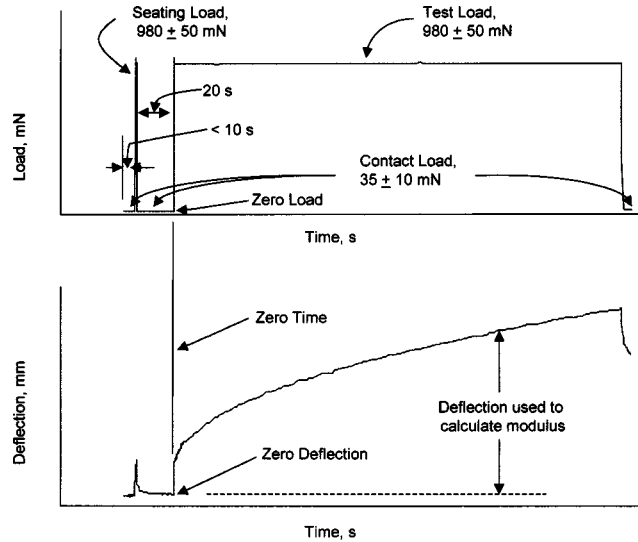


FIG. 2 Definition of Loading Pattern

movement of 2.5 μm . It shall be mounted axially with and above the loading shaft.

7.3.5 *Sample Supports*—Two stainless steel or other non-corrosive metal supports with a 3.0 ± 0.3 mm contact radius and spaced 102 ± 1.0 mm apart. The spacing of the supports shall be measured to ± 0.3 mm and the measured value shall be used in the calculations in Section 14. The supports shall be dimensioned to ensure that the test specimen remains in contact with the radiused portion of the support during the entire test. See Fig. 3.

7.3.5.1 The width of the test specimen support in contact with the test specimen shall be 9.50 ± 0.25 mm. See Fig. 3.

7.3.5.2 A vertical alignment pin 2 to 4 mm in diameter shall be provided at the back of each support to align the test specimen on the supports. The front face of the pins shall be 6.75 ± 0.25 mm from the middle of the support. See Fig. 3.

7.4 *Temperature Transducer*—A calibrated temperature transducer capable of measuring the temperature to 0.1°C over the range from -36°C to 0°C and mounted within 50 mm of the geometric center of the test specimen.

NOTE 1—The required temperature measurement can be accomplished with an appropriately calibrated platinum resistance thermometer (PRT) or a thermistor. Calibration of the PRT or thermistor can be verified as per section 11.5. A platinum resistance thermometer meeting DIN Standard 43760 (Class A) is recommended for this purpose.

7.5 *Controlled-Temperature Fluid Bath*—A controlled-temperature liquid bath capable of maintaining the temperature at all points in the bath to within $\pm 0.1^\circ\text{C}$ of the test temperature in the range of -36°C to 0°C . Placing a test specimen in the bath may cause the bath temperature to fluctuate $\pm 0.2^\circ\text{C}$ from the target test temperature. Consequently bath fluctuations of $\pm 0.2^\circ\text{C}$ during iso-thermal conditioning shall be allowed.

7.5.1 *Bath Agitator*—A bath agitator for maintaining the required temperature homogeneity with agitation intensity such that the fluid currents do not disturb the testing process and mechanical noise caused by vibrations is less than the resolution specified in 7.3.3 and 7.3.4.

7.5.2 *Circulating Bath (Optional)*—A circulating bath unit separate from the test frame, which pumps the bath fluid through the test bath. If used, vibrations from the circulating system shall be isolated from the bath test chamber so that mechanical noise is less than the resolution specified in 7.3.3 and 7.3.4.

7.6 *Data Acquisition and Control Components*—A data acquisition system that resolves loads to the nearest 2.5 mN, test specimen deflection to the nearest 2.5 μm , and bath fluid temperature to the nearest 0.1°C . The data acquisition system shall sense the point in time when the signal to switch from the

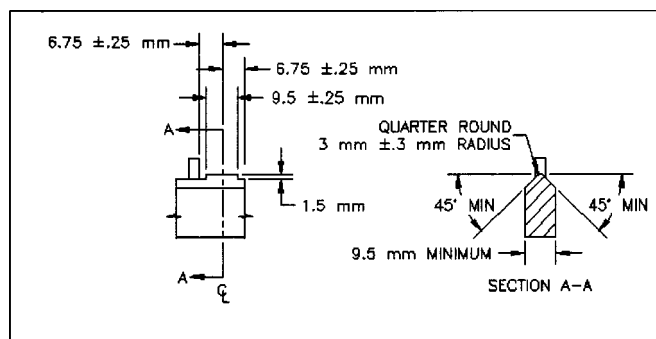


FIG. 3 Schematic of Specimen Supports